



GMT MONTHLY MEMBERSHIP PROGRESS REPORT

Results as of: 2/29/2020

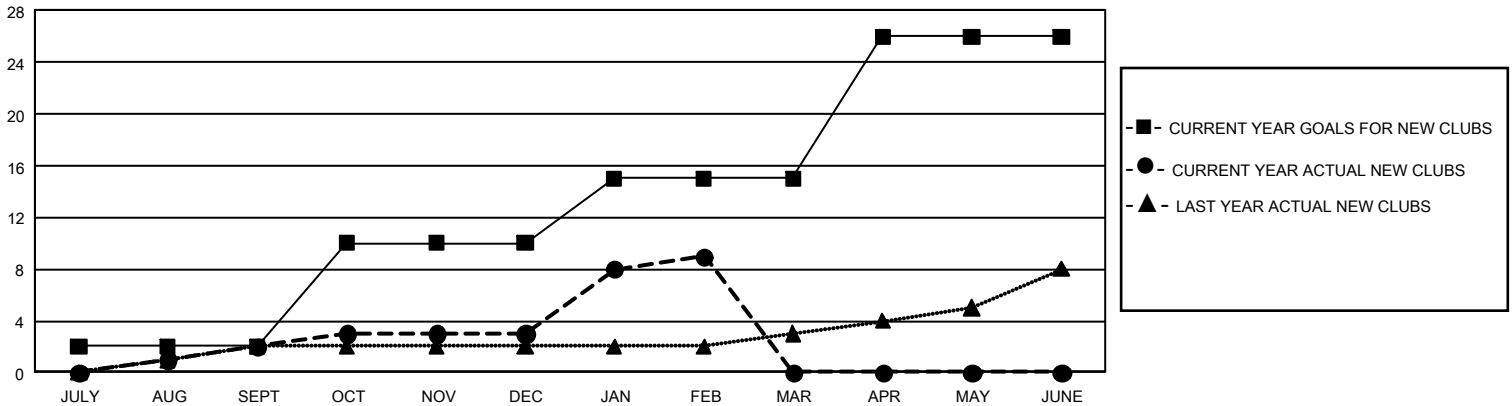
GMT Constitutional Area 7, Group A

GMT: OPEN

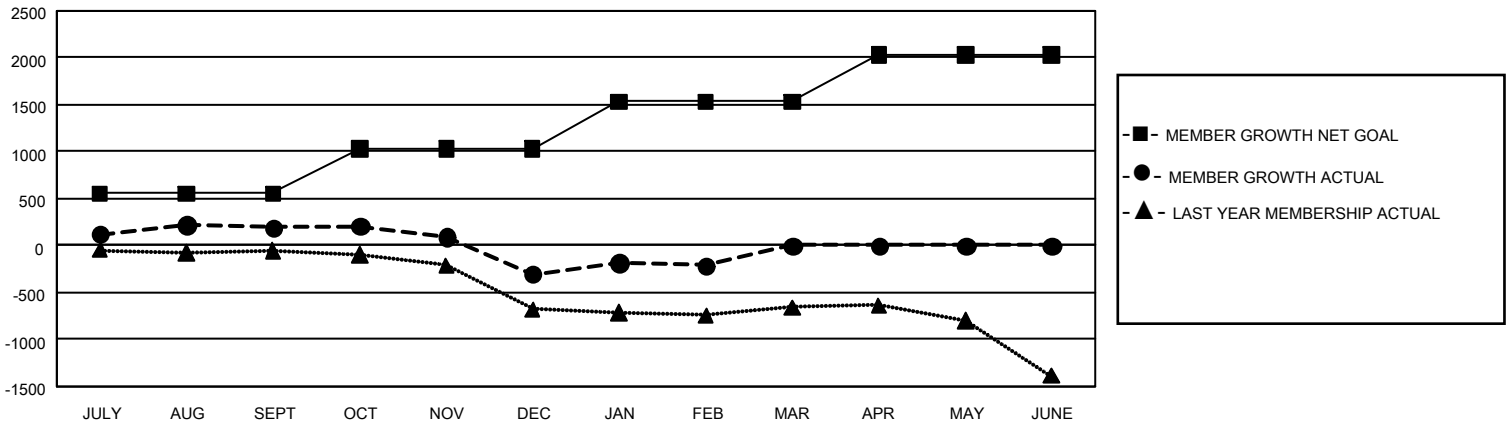
REPORT DOES NOT INCLUDE CLUBS IN UNDISTRICTED AREAS.

Clubs				Members			
RESULTS FOR 2019-2020				RESULTS FOR 2019-2020			
QUARTER	NEW CLUB GOAL	NEW CLUBS	DROPPED CLUBS	QUARTER	MEMBER GROWTH NET GOAL	MEMBER GROWTH ACTUAL	DROPPED MEMBERS ACTUAL (including transfers)
JULY/AUG/SEPT	6	2	7	JULY/AUG/SEPT	1,656	1,100	774
OCT/NOV/DEC	24	1	4	OCT/NOV/DEC	1,443	685	1,083
JAN/FEB/MAR	15	6	5	JAN/FEB/MAR	1,506	717	556
APR/MAY/JUNE	33	0	0	APR/MAY/JUNE	1,503	0	0

GOALS AND ACTUAL NEW CLUBS CUMULATIVE



GOALS AND ACTUAL MEMBERS CUMULATIVE



DROPPED CLUBS: 16

721 CLUBS OF 1,395 ADDED 1 OR MORE NEW MEMBERS

GENDER DISTRIBUTION

MALE 18,887 (65.00%)
FEMALE 10,172 (35.00%)

DROPPED MEMBERS

DECEASED	250
CLUB CANCELLED	15
OTHER	2,147
TOTAL	2,412

[CLICK HERE FOR CUMULATIVE MEMBERSHIP DATA](#)

TOTAL FAMILY UNIT MEMBERS 4,658

FAMILY MEMBERS PAYING HALF DUES 2,362